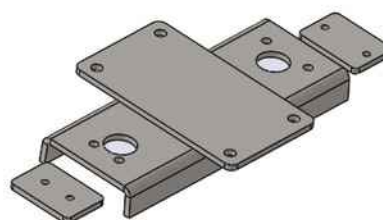
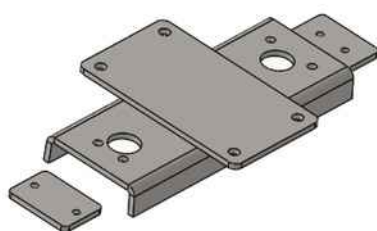
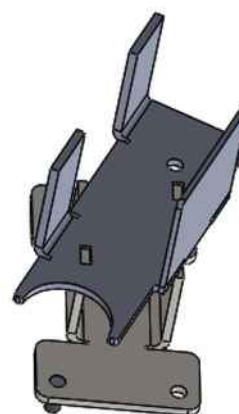
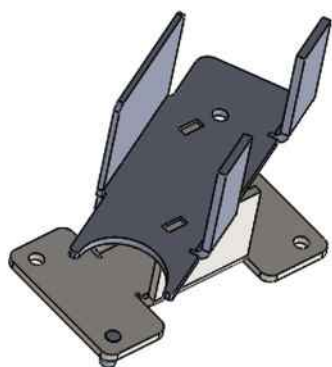


Autolift System

ADAPTERS FOR MERCEDES 316 SINCE 2016 Art. 465110



DE	-	BENUTZERHANDBUCH.....	2
EN	-	USER'S INSTRUCTION.....	7
IT	-	MANUALE D'ISTRUZIONI.....	13
ES	-	MANUAL DEL USUARIO.....	19
NL	-	INSTUCTIEHANDLEIDING.....	25
FR	-	MANUEL D'UTILISATION.....	31
FI	-	KÄYTTÖOHJE.....	37
DK	-	BRUGERHÅNDBOG.....	43
SE	-	ANVÄNDARMANUAL.....	49

ADAPTER VORNE LINKS MERCEDES 316

SCHRITT 1:



Die Dichtungsplatte in das Loch am Rahmen einsetzen, den Adapter aufsetzen und nach vorne drücken.

**SCHRITT 2:**

Befestigen Sie den Adapter mit einer M10 Schraube.

Adapter vorne rechts

SCHRITT 3:

Führen Sie die gleiche Prozedur für den vorderen rechten Adapter durch.

SCHRITT 4:

Befestigen Sie die Wagenheber.



Die Motorbuchse zeigt zur Außenseite des Fahrzeugs und die Drehung nach hinten

ADAPTER HINTEN LINKS MERCEDES 316

SCHRITT 1:



Bringen Sie den Adapter in der auf dem Foto gezeigten Position hinter dem Träger der Armbrustaufhängung an.

SCHRITT 2:





Befestigen Sie die Wagenheber.

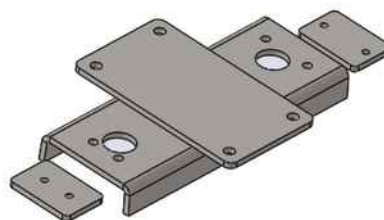
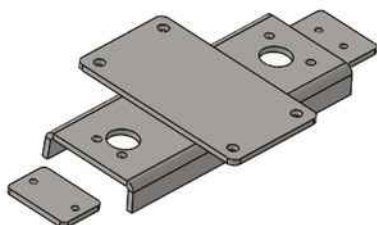
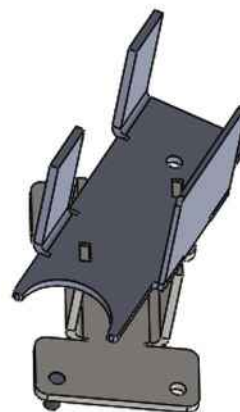
SCHRITT 3: ADAPTER HINTEN RECHTS

Führen Sie die gleiche Prozedur für den hinteren rechten Adapter durch.

Achtung: Die Motorbuchse muss zur Mitte oder zur Außenseite des Fahrzeugs gerichtet sein, während sie sich nach hinten dreht.

Autolift System

ADAPTERS FOR MERCEDES 316 SINCE 2016
Art. 465110



FRONT LEFT ADAPTER MERCEDES 316

STEP 1:



Insert the sealing plate in the hole on the frame, put the adapter and push towards the front.

**STEP 2:**

Fix the adapter with an M10 bolt.

Front right adapter

STEP 3:

Use the same procedure for the front right adapter

STEP 4:

Fix the jacks.



Motor jack facing towards the outside of the vehicle and rotation towards the rear

REAR LEFT ADAPTER MERCEDES 316

STEP 1:



Put the adapter in the position shown in the photo, behind the support of the crossbow suspension.

STEP 2:





Fix the jacks.

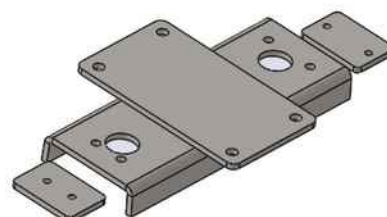
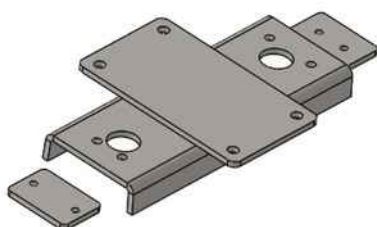
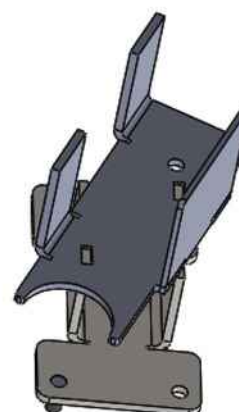
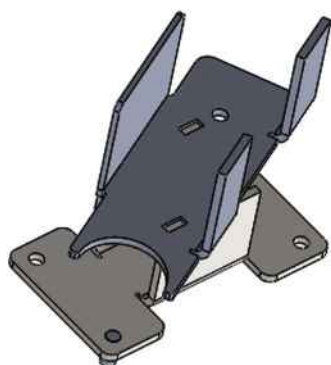
STEP 3: REAR RIGHT ADAPTER

Use the same procedure for the rear right adapter.

Attention: the motor jack should be facing towards the center or the outside of the vehicle, while rotating towards the back.

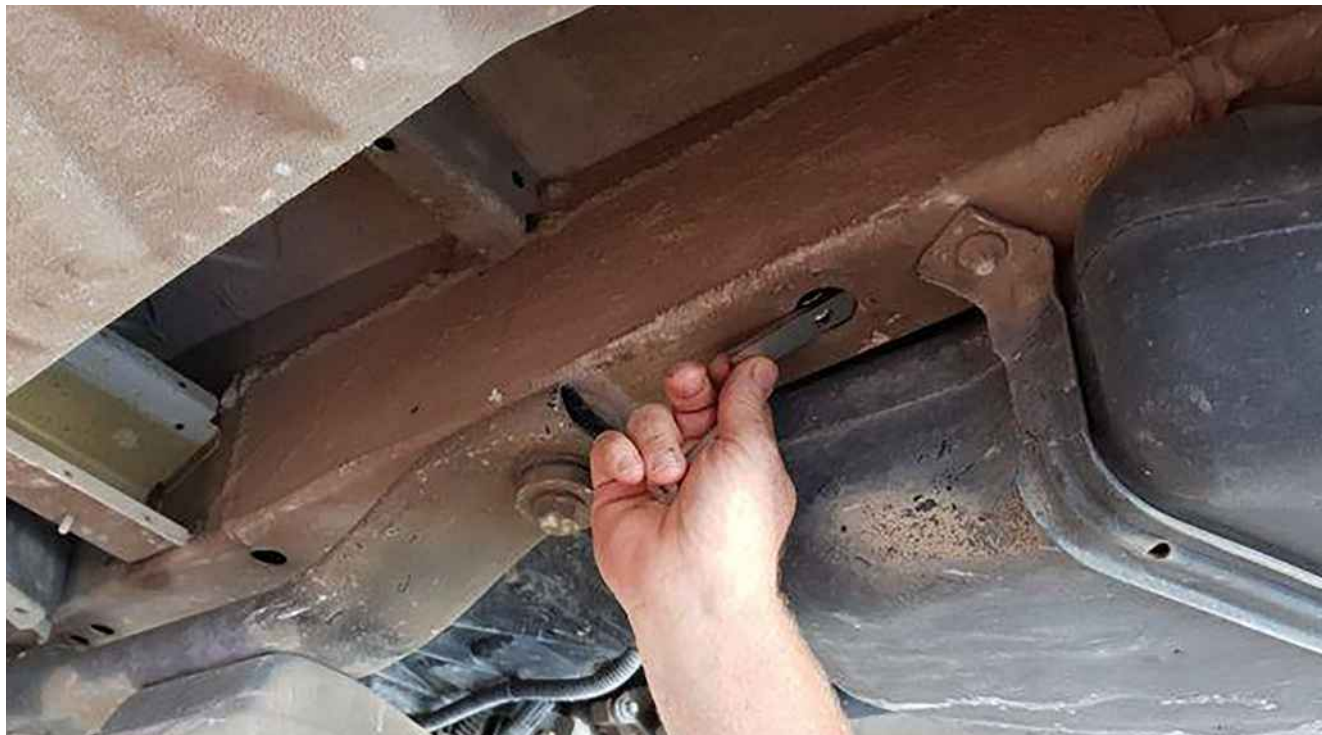
Autolift System

ADATTATORI PER MERCEDES 316 DAL 2016
Art. 465110



ADATTATORE ANTERIORE SINISTRO MERCEDES 316

PASSO 1:



Inserire la piastra di tenuta nel foro del telaio, inserire l'adattatore e spingere verso la parte anteriore.

**PASSO 2:**

Fissare l'adattatore con un bullone M10.

Adattatore anteriore destro

FASE 3:

Utilizzare la stessa procedura per l'adattatore anteriore destro

FASE 4:

Fissare i martinetti.



Martinetto motore rivolto verso l'esterno del veicolo e rotazione verso la parte posteriore

ADATTATORE POSTERIORE SINISTRO MERCEDES 316

FASE 1:



Posizionare l'adattatore nella posizione mostrata nella foto, dietro il supporto della sospensione della balestra.

FASE 2:





Fissare i martinetti.

FASE 3: ADATTATORE POSTERIORE DESTRO

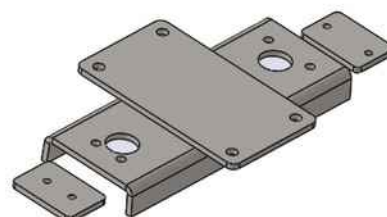
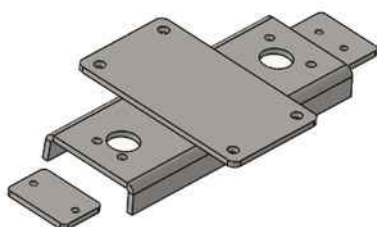
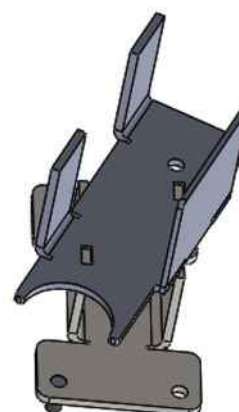
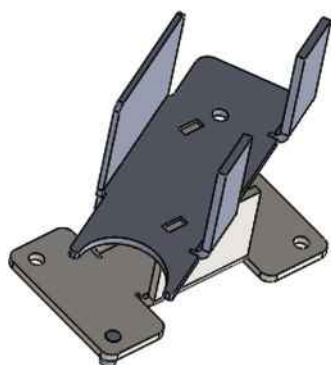
Utilizzare la stessa procedura per l'adattatore posteriore destro.

Attenzione: il martinetto del motore deve essere rivolto verso il centro o l'esterno del veicolo, mentre ruota verso la parte posteriore.

Autolift System

ADAPTADORES PARA MERCEDES 316 DESDE 2016

Art. 465110



ADAPTADOR DELANTERO IZQUIERDO MERCEDES 316

PASO 1:



Inserte la placa de sellado en el orificio del bastidor, coloque el adaptador y empuje hacia la parte delantera.

**PASO 2:**

Fijar el adaptador con un tornillo M10.

Adaptador delantero derecho

PASO 3:

Utilice el mismo procedimiento para el adaptador delantero derecho

PASO 4:

Fije los gatos.



Gato motor orientado hacia el exterior del vehículo y rotación hacia la parte trasera

ADAPTADOR TRASERO IZQUIERDO MERCEDES 316

PASO 1:



Colocar el adaptador en la posición indicada en la foto, detrás del soporte de la suspensión de la ballesta.

PASO 2:





Fijar los gatos.

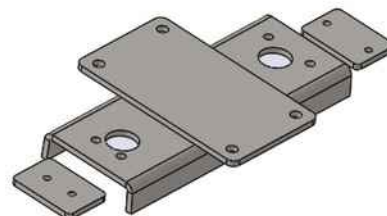
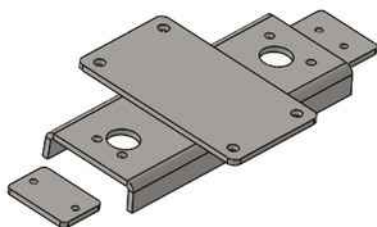
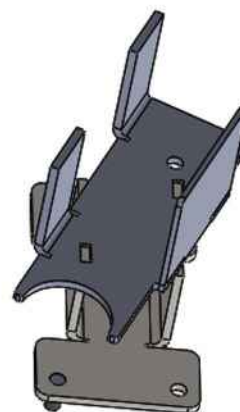
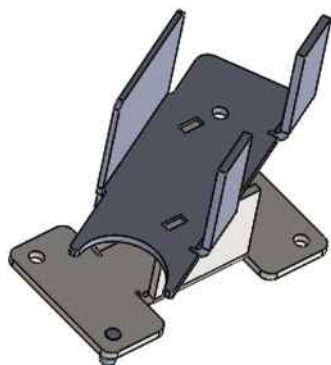
PASO 3: ADAPTADOR TRASERO DERECHO

Utilice el mismo procedimiento para el adaptador trasero derecho.

Atención: el gato del motor debe estar orientado hacia el centro o el exterior del vehículo, mientras gira hacia la parte trasera.

Autolift System

ADAPTERS VOOR MERCEDES 316 SINDS 2016
Art. 465110



ADAPTER VOORAAN LINKS MERCEDES 316

STAP 1:



Plaats de afdichtplaat in het gat op het frame, plaats de adapter en duw naar voren.

**STAP 2:**

Zet de adapter vast met een M10 bout.

Adapter rechtsvoor

STAP 3:

Gebruik dezelfde procedure voor de adapter rechtsvoor

STAP 4:

Bevestig de krikken.



Motorsteunen naar de buitenkant van het voertuig gericht en draaiing naar achteren

ADAPTER LINKSACHTER MERCEDES 316

STAP 1:



Zet de adapter in de positie zoals op de foto, achter de steun van de kruisboogophanging.

STAP 2:





Bevestig de steunen.

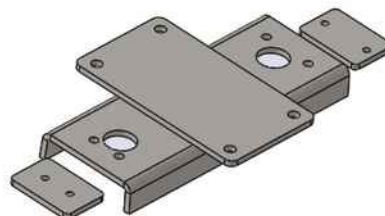
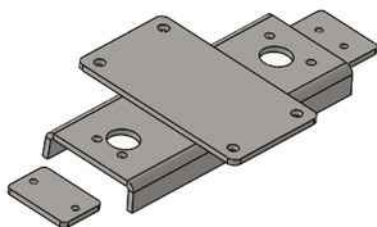
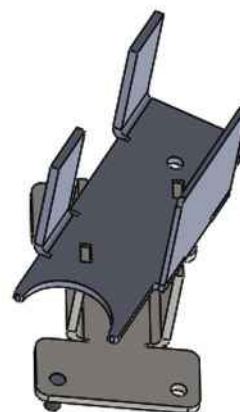
STAP 3: ADAPTER RECHTS ACHTERAAN

Gebruik dezelfde procedure voor de adapter rechtsachter.

Let op: de motorsteun moet naar het midden of naar de buitenkant van het voertuig gericht zijn, terwijl hij naar achteren draait.

Autolift System

ADAPTATEURS POUR MERCEDES 316 DEPUIS
2016
Art. 465110



ADAPTATEUR AVANT GAUCHE MERCEDES 316

ÉTAPE 1 :



Insérez la plaque d'étanchéité dans le trou du châssis, mettez l'adaptateur et poussez vers l'avant.



ÉTAPE 2 :



Fixez l'adaptateur avec un boulon M10.

Adaptateur avant droit

ÉTAPE 3 :

Procédez de la même manière pour l'adaptateur avant droit

ÉTAPE 4 :

Fixez les vérins.



Le cric moteur doit être orienté vers l'extérieur du véhicule et la rotation vers l'arrière

ADAPTATEUR ARRIÈRE GAUCHE MERCEDES 316

ÉTAPE 1 :



Placez l'adaptateur dans la position indiquée sur la photo, derrière le support de la suspension de l'arbalète.

ÉTAPE 2 :





Fixez les vérins.

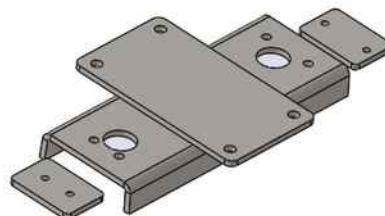
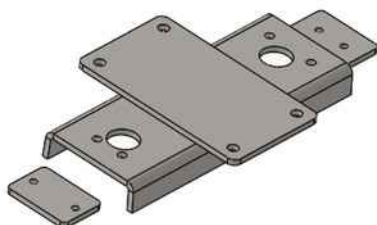
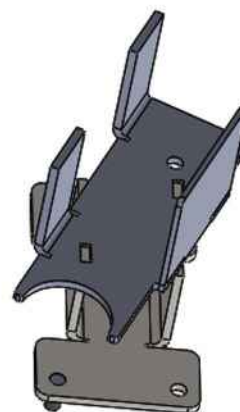
ÉTAPE 3 : ADAPTATEUR ARRIÈRE DROIT

Procédez de la même manière pour l'adaptateur arrière droit.

Attention : le cric moteur doit être orienté vers le centre ou l'extérieur du véhicule, tout en tournant vers l'arrière.

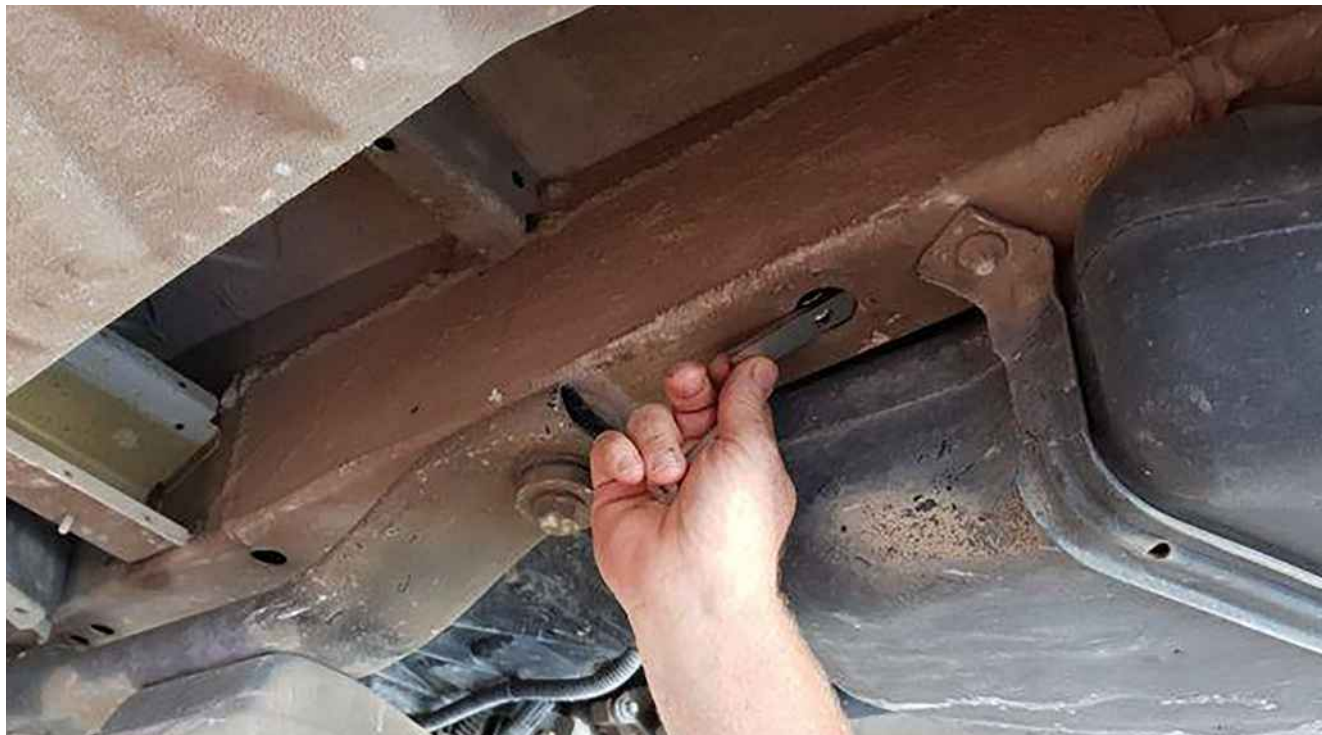
Autolift System

SOVITTIMET MERCEDES 316 VUODESTA 2016
ALKAEN
Art. 465110



VASEN ETUSOVITIN MERCEDES 316

VAIHE 1:



Aseta tiivistyslevy rungossa olevaan reikään, aseta sovitin ja työnnä sitä eteenpäin.

**VAIHE 2:**

Kiinnitä sovitin M10-pultilla.

Oikea etusovitin

VAIHE 3:

Noudata samaa menettelyä oikean etuosan sovittimen kohdalla

VAIHE 4:

Kiinnitä liittimet.



Moottoritunkki ajoneuvon ulkopuolelle päin ja kierto taaksepäin

VASEMMANPUOLEINEN TAKASOVITIN MERCEDES 316

VAIHE 1:



Aseta sovitin kuvan osoittamaan asentoon, ristiseläntuen jousituksen tuen taakse.

VAIHE 2:





Kiinnitä tunkit.

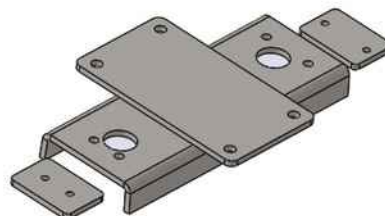
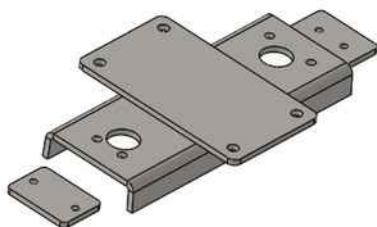
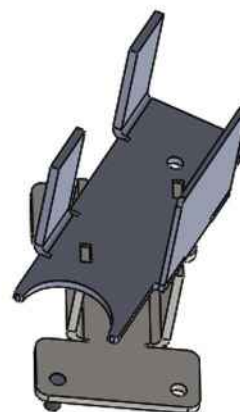
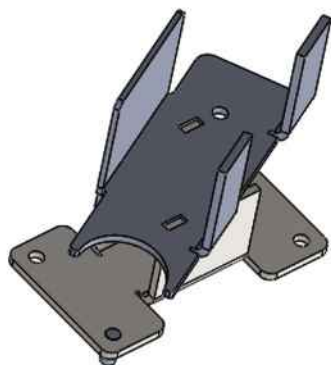
VAIHE 3: OIKEA TAKAOSAN SOVITIN

Noudata samaa menettelyä oikean takaosan sovittimen kohdalla.

Huomio: moottoritunkki on suunnattava ajoneuvon keskelle tai ulkopuolelle, kun sitä käännetään taaksepäin.

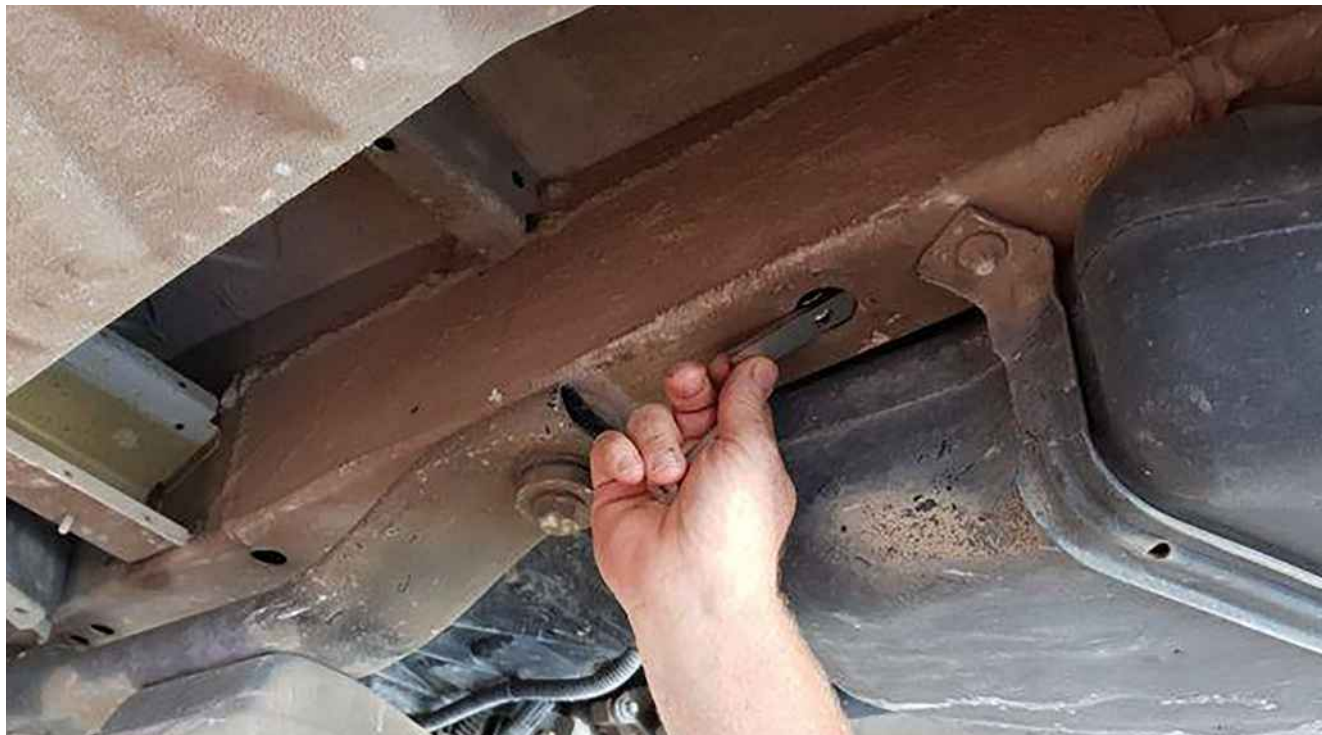
Autolift System

ADAPTERE TIL MERCEDES 316 SIDEN 2016
Art. 465110



ADAPTER FORAN VENSTRE MERCEDES 316

TRIN 1:



Sæt tætningspladen i hullet på rammen, sæt adapteren på og skub mod fronten.

**TRIN 2:**

Fastgør adapteren med en M10 bolt.

Adapter foran højre

TRIN 3:

Brug samme procedure for den forreste højre adapter

TRIN 4:

Fastgør donkrafterne.



Motorstik vender mod køretøjets yderside og rotation mod bagsiden

ADAPTER BAGTIL VENSTRE MERCEDES 316

TRIN 1:



Sæt adapteren i den position, der er vist på billedet, bag støtte for krydsophænget.

TRIN 2:





Fastgør donkrafterne.

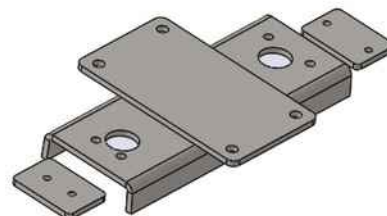
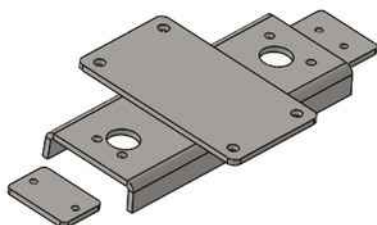
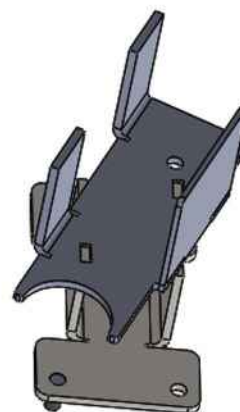
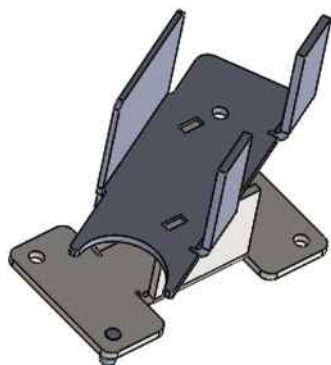
TRIN 3: ADAPTER BAGTIL HØJRE

Brug samme procedure for den bageste højre adapter.

Opmærksomhed: Motordykket skal vende mod midten eller ydersiden af køretøjet, mens det drejes mod bagsiden.

Autolift System

ADAPTRAR FÖR MERCEDES 316 SEDAN 2016
Art. 465110



FRAM VÄNSTER ADAPTER MERCEDES 316

STEG 1:



Sätt in tätningsplattan i hålet på ramen, sätt på adaptorn och tryck den framåt.

**STEG 2:**

Fäst adaptern med en M10-bult.

Adapter för höger framsida

STEG 3:

Använd samma förfarande för den främre högra adaptern

STEG 4:

Fäst domkrafterna.



Motorns domkraft är vänd mot fordonets utsida och rotationen mot baksidan

BAKRE VÄNSTER ADAPTER MERCEDES 316

STEG 1:



Sätt adaptorn i det läge som visas på bilden, bakom korsbågsupphängningens stöd.

STEG 2:





Fäst domkrafterna.

STEG 3: BAKRE HÖGRA ADAPTERN

Använd samma förfarande för den bakre högra adaptern.

Uppmärksamhet: motorjacket ska vara riktat mot fordonets mitt eller utsida, medan det roterar mot baksidan.



REIMO REISEMOBIL-CENTER GMBH
63329 EGELSBACH · BOSCHRING 10 · GERMANY · WWW.REIMO.COM
MADE IN ITALY · © REIMO 06/2022